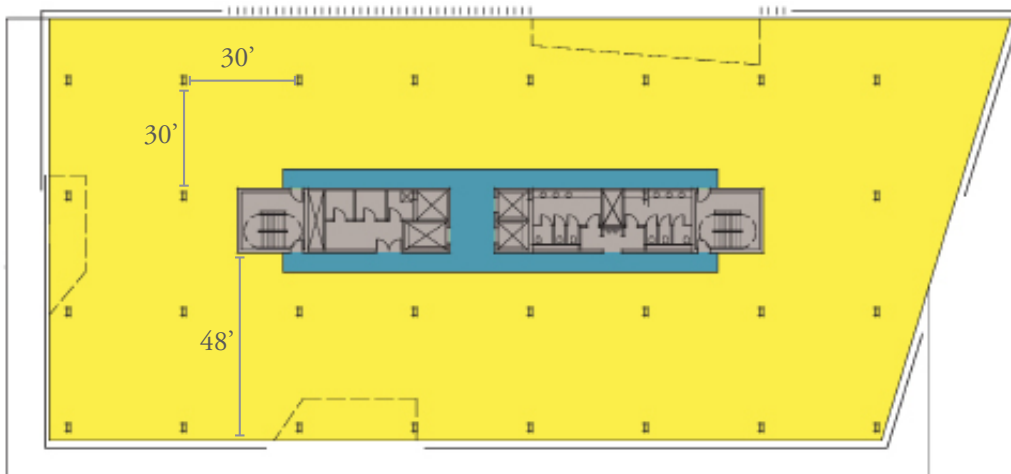




# 979 PLAYA DEL NORTE

<b>ADDRESS</b>	979 Playa del Norte   Tempe, Arizona 85281 Just south of the Loop 202 Freeway at Scottsdale Road
<b>TOTAL BUILDING SIZE</b>	±50,000 to ±111,000 SF available for build-to-suit
<b>LEASE RATE</b>	Starting rate of \$34.00 RSF, full service
<b>PARKING</b>	5/1,000 SF total parking 3/1,000 SF unreserved structured parking with direct elevator access to suite .5/1,000 SF reserved subterranean executive parking
<b>OPERATING EXPENSE STOP</b>	Base Year
<b>TENANT IMPROVEMENTS</b>	Turn-key to building standard
<b>SIGNAGE</b>	Prominent freeway visible exterior building signage available Loop 202 Freeway pylon signage available Rooftop signage available
<b>FINISHED CEILING HEIGHTS</b>	First Floor ±12 Feet - ±14 Feet Six-Ninth Floor ±10 Feet - ±12 Feet
<b>TYPICAL FLOOR PLAN</b>	Six-Ninth Floor



**979**  
PLAYA DEL NORTE | TEMPE  
[www.979playadelnorte.com](http://www.979playadelnorte.com)



**Jerry Noble**  
Office Properties  
602.229.5912  
[jerry.noble@cushwake.com](mailto:jerry.noble@cushwake.com)

**Gregory Mayer**  
Office Properties  
602.229.5905  
[greg.mayer@cushwake.com](mailto:greg.mayer@cushwake.com)

**Patrick Schrimsher**  
Office Properties  
602.468.8529  
[patrick.schrimsher@cushwake.com](mailto:patrick.schrimsher@cushwake.com)



**Jason S. Meszaros**  
Vice President/Market Manager  
602.682.0199  
[jmeszaros@irgens.com](mailto:jmeszaros@irgens.com)

**Jason R. Anzalone**  
Vice President  
602.682.0192  
[janzalone@irgens.com](mailto:janzalone@irgens.com)

Information contained herein was furnished by sources deemed reliable and is believed to be accurate; however, no warranty or representation is made as to the accuracy thereof and is subject to correction. Terms subject to change without notice.